

The Non-Democratic Roots of Mass Education: Evidence from 200 Years— CORRIGENDUM

Agustina S. Paglayan

doi: <https://doi.org/10.1017/S0003055420000647>. Published online by Cambridge University Press, 11 September 2020

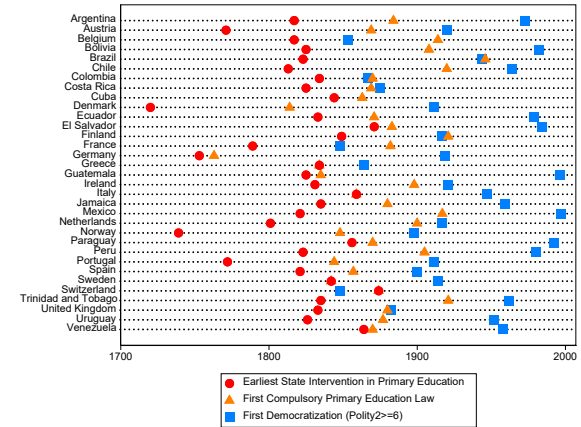
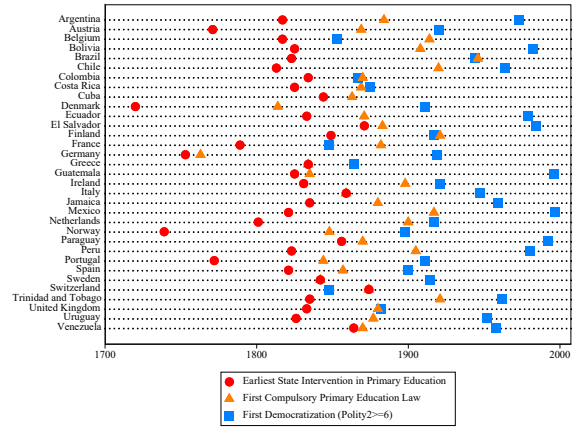
The original article “The Non-Democratic Roots of Mass Education: Evidence from 200 Years” concludes that, on average, (i) “central governments began to regulate primary education about a century before a country’s first transition to democracy” (Figure 3); (ii) “over two-thirds of school-age children were already enrolled in primary school a decade before democratization” (Figure 4, Panel A); (iii) “democratization had no or little impact on primary school enrollment rates” (Figures 5 and 6); and (iv) “democratization can lead to an expansion of primary schooling, but the key condition under which it does—when a majority lacked access to primary schooling before democratization—rarely holds” (Panel B of Figure 4, Figure 7, and Table 1). This corrigendum corrects coding errors that affected Figures 3-7 and Table 1 of the original article. These errors led to (a) Barbados, Belize, Iceland, and Malta being classified as non-democracies according to Polity, when in fact they should be coded as missing; (b) many countries being incorrectly coded as not having universal male suffrage (UMS) from 2001-2010 according to the PIPE dataset, when in fact they should be coded as having UMS; (c) countries that never democratized being accidentally dropped when producing Panel B of Figure 6; and (d) data from 1830-2010 being used to produce Figures 6-7 and Table 1, when in fact data from 1820-2010 should be used as indicated by the title of these illustrations. The author regrets these errors. The revised code and dataset and the revised Supplementary Materials are available on Dataverse. The revised code also includes information about the assumptions that were made when merging Lee and Lee’s school enrollment dataset with the three datasets used to measure the timing of democratization. As shown below, the difference between the original results and the corrected ones is barely perceptible. The conclusions of the original article remain unaltered.

Original Figure

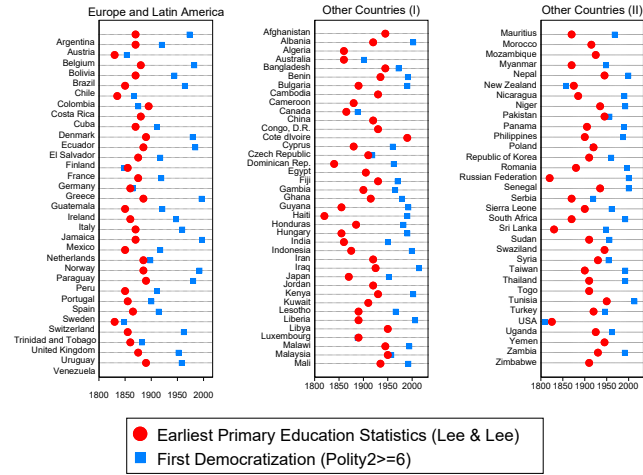
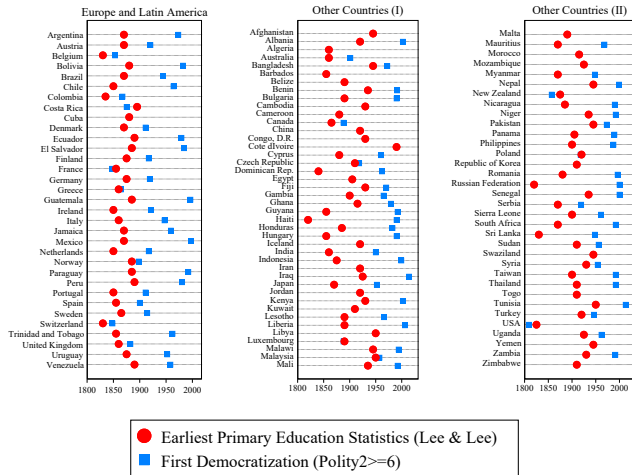
Corrected Figure

Figure 3: Timing of Democratization and State Intervention in Primary Education, by Country

Panel A: Europe and Latin America (33 countries)



Panel B: All Regions (109 countries)

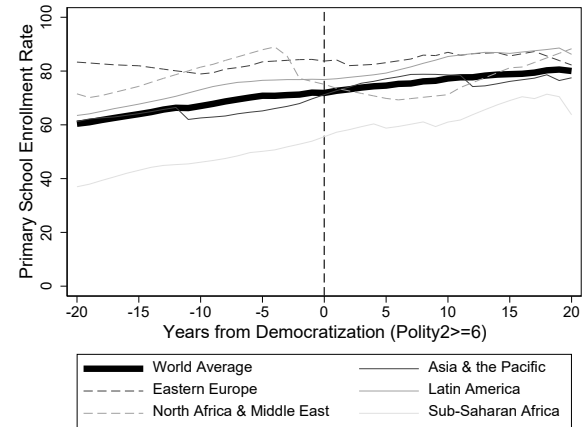
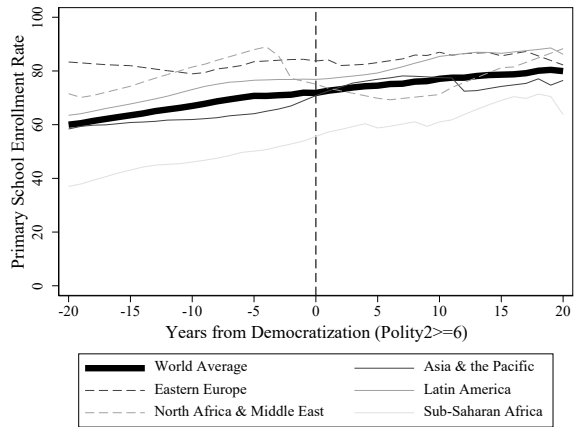


Original Figure

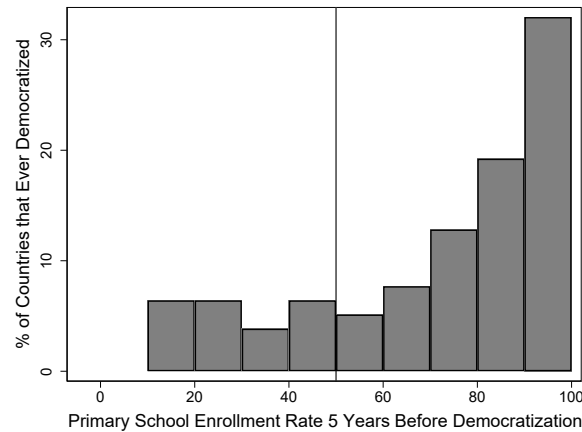
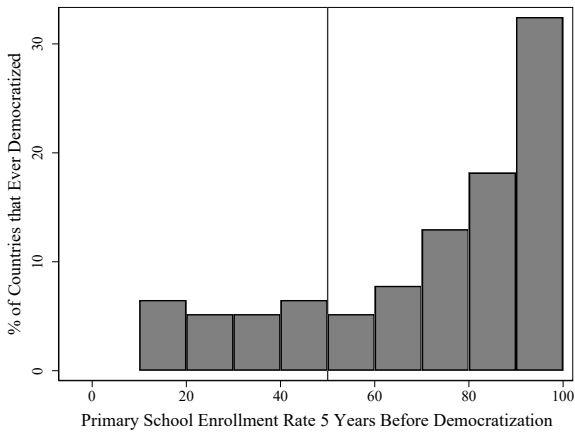
Corrected Figure

Figure 4: Primary School Enrollment Rates in Countries that Experienced Democratization, 1820–2010

Panel A: Average Enrollment Rate Before and After Democratization, World and Regional Means



Panel B: Distribution of Enrollment Rates 5 Years Before Democratization

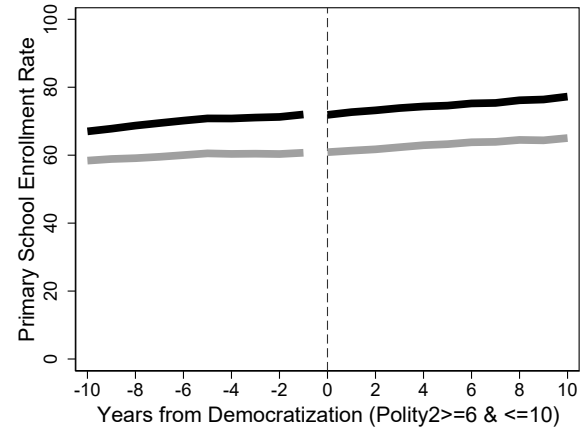
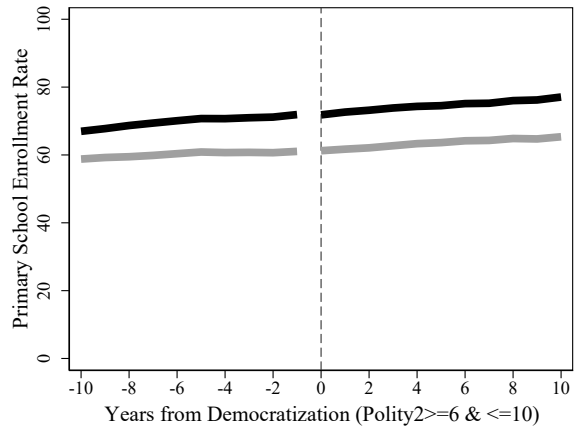


Original Figure

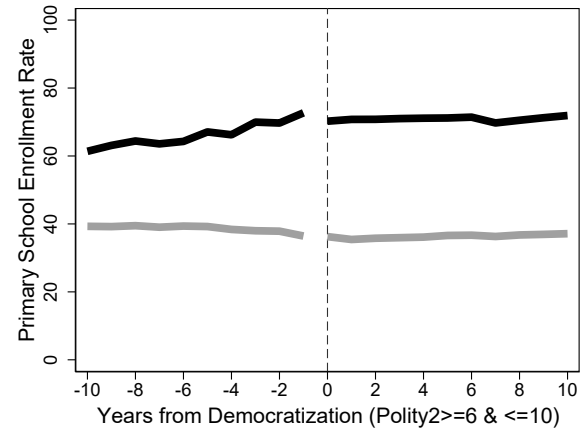
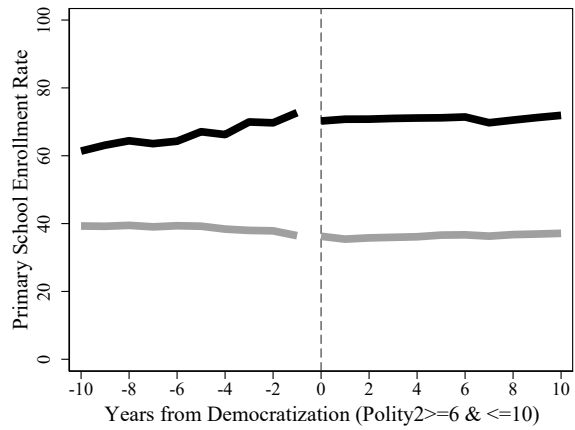
Corrected Figure

Figure 5: Average Primary School Enrollment Rates before and after Democratization, Treated and Comparison Countries, 1820–2010 and Subperiods

Panel A: 1820-2010

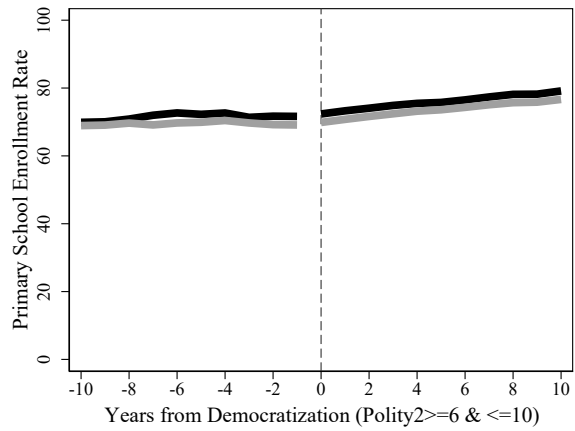
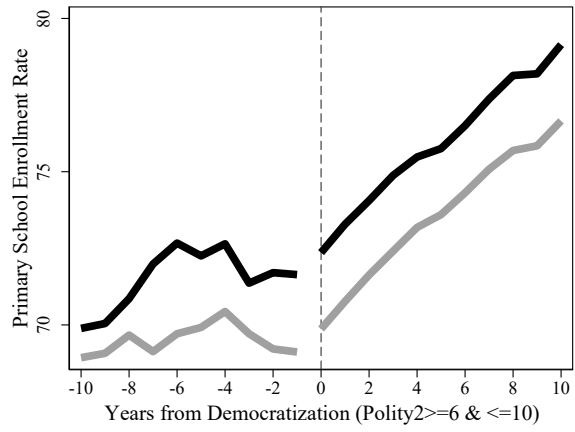


Panel B: 1820-1945

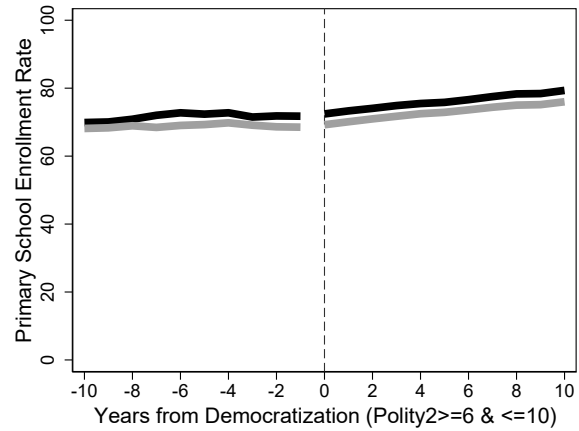
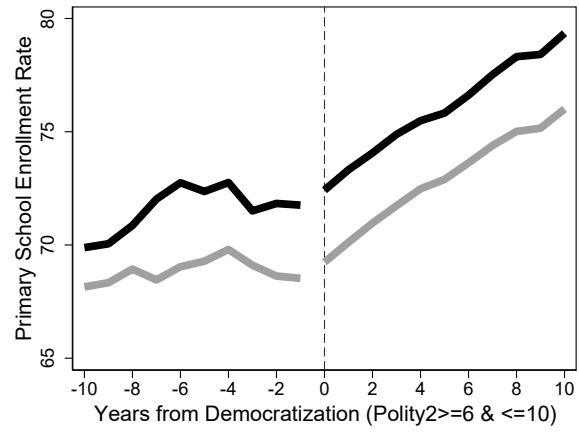


Original Figure

Panel C: 1945-2010



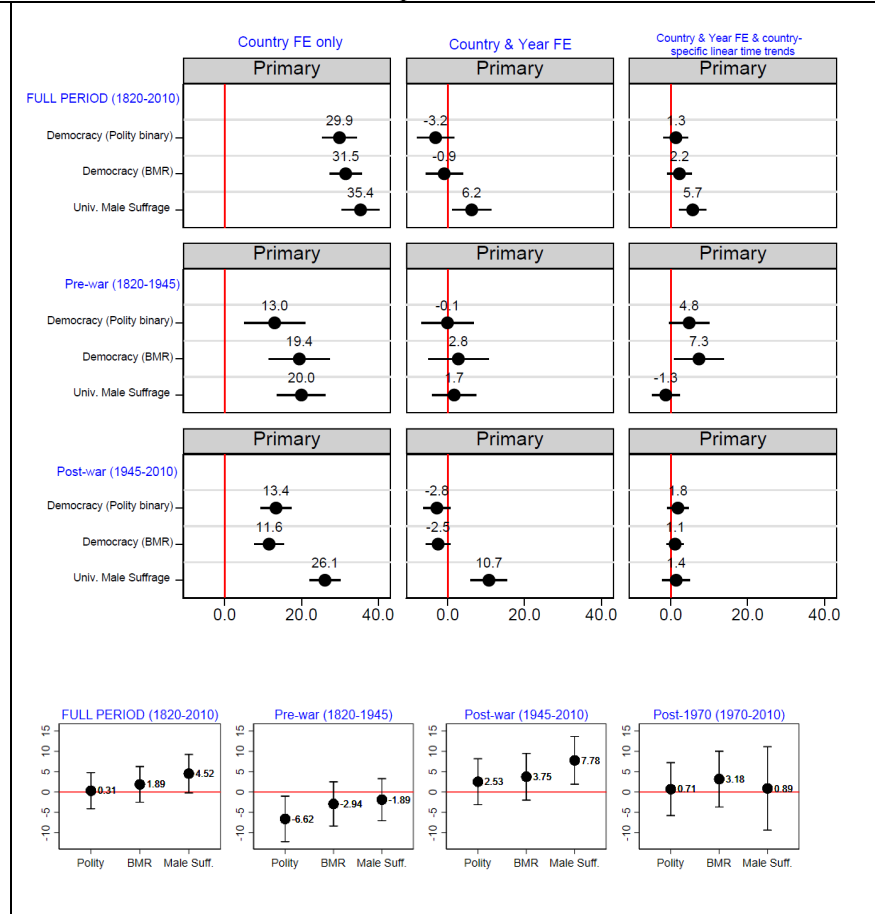
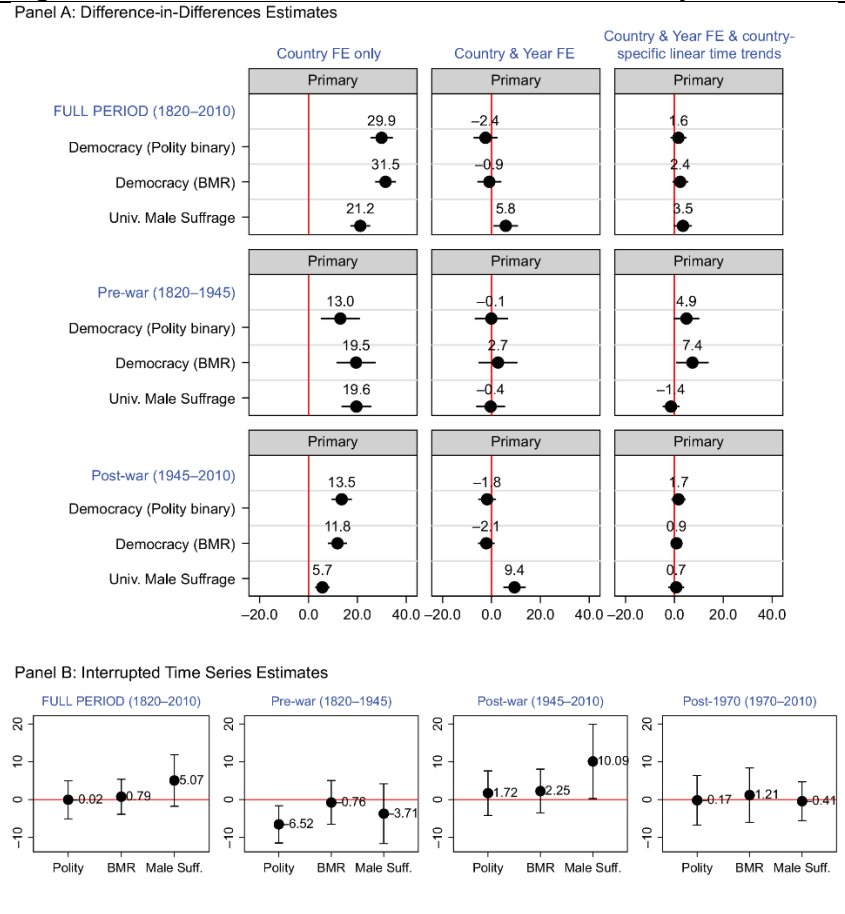
Corrected Figure



Original Figure

Corrected Figure

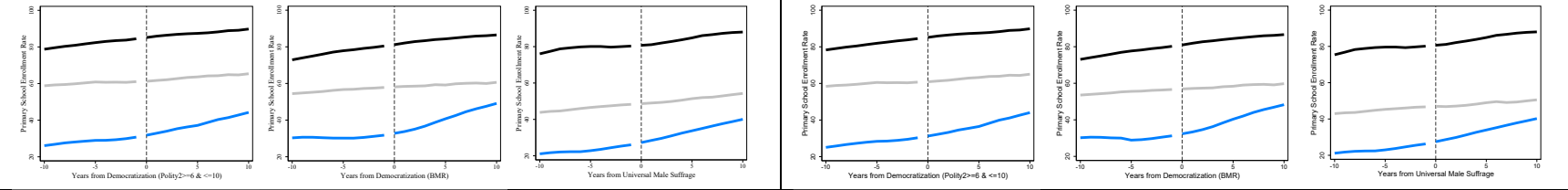
Figure 6: Estimated Effect of Democratization on Primary School Enrollment Rates, 1820–2010 and Subperiods



Original Figure

Corrected Figure

Figure 7: Average Primary School Enrollment Rates before and after Democratization, Treated Countries by Whether or Not a Majority of Children Were Already Enrolled in Primary Schooling before Democratization, and Comparison Countries, 1820–2010



Original Table

Corrected Table

Table 1: Heterogeneous Effect of Democratization Depending on Whether a Majority of Children Already Had Access to Primary Education before Democratization, 1820–2010

Independent variable:	Panel A: OLS			Panel B: Tobit		
	Primary	Secondary	Tertiary	Primary	Secondary	Tertiary
	School enrollment rate			School enrollment rate		
Polity 2 between 6 and 10						
<i>democracy</i>	5.3 (3.5623)	-5.1 (3.2870)	-2.6 (2.6150)	5.1 (3.0542)	-5.2 (3.3095)	-2.6 (2.5901)
<i>democracy x majority enrolled in primary</i>	-8.6* (4.1463)	13.2** (3.9961)	3.6 (3.2115)	-8.0* (3.8664)	13.1** (4.0243)	3.6 (3.1808)
Democracy (BMR)						
<i>democracy</i>	6.0* (3.2197)	-12.2** (2.7032)	-7.2** (2.2573)	6.2* (2.9740)	-12.4** (2.7360)	-7.2** (2.2366)
<i>democracy x majority enrolled in primary</i>	-9.7** (3.4496)	18.2** (3.0982)	6.1* (2.4868)	-7.2* (3.4015)	18.2** (3.1331)	6.1* (2.4640)
Universal male suffrage (PIPE)						
<i>democracy</i>	15.7** (3.1897)	-17.3** (2.6090)	-9.4** (1.4516)	15.9** (3.3165)	-17.3** (2.6001)	-9.4** (1.4394)
<i>democracy x majority enrolled in primary</i>	-10.2** (2.9843)	18.7** (2.6514)	3.1* (1.2598)	-9.9** (3.3067)	18.5** (2.6297)	3.1* (1.2490)

Independent variable:	Panel A: OLS			Panel B: Tobit		
	Primary	Secondary	Tertiary	Primary	Secondary	Tertiary
	school enrollment rate			school enrollment rate		
Polity2 between 6 and 10						
<i>democracy</i>	5.3 (3.5035)	-5.0 (3.1997)	-2.4 (2.5656)	5.3 (3.0101)	-5.0 (3.2212)	-2.4 (2.5401)
<i>democracy x majority enrolled in primary</i>	-9.2 * (4.0357)	13.5 ** (3.8962)	3.9 (3.1734)	-8.5 * (3.7863)	13.4 ** (3.9217)	3.9 (3.1423)
Democracy (BMR)						
<i>democracy</i>	7.5 * (3.0669)	-10.7 ** (2.6471)	-6.4 ** (2.1928)	5.8 * (2.8445)	-10.9 ** (2.6781)	-6.4 ** (2.1720)
<i>democracy x majority enrolled in primary</i>	-9.6 ** (3.3068)	17.2 ** (3.0377)	5.8 * (2.4700)	-7.0 * (3.2983)	17.2 ** (3.0675)	5.8 * (2.4473)
Universal male suffrage (PIPE)						
<i>democracy</i>	22.5 ** (3.3832)	-17.0 ** (2.8853)	-11.7 ** (1.7098)	21.5 ** (3.5752)	-17.1 ** (2.8793)	-11.7 ** (1.6929)
<i>democracy x majority enrolled in primary</i>	-22.2 ** (3.7182)	22.2 ** (3.4147)	10.8 ** (2.0133)	-19.6 ** (3.9454)	22.3 ** (3.3933)	10.8 ** (1.9934)